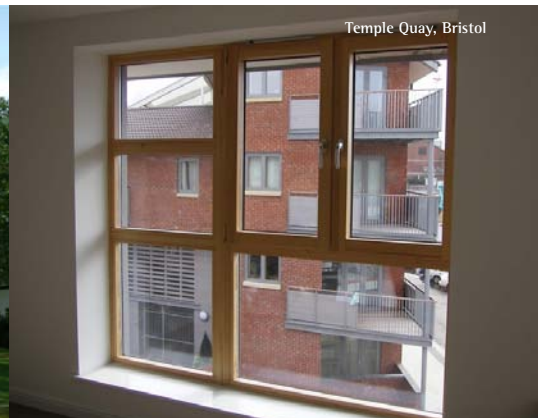
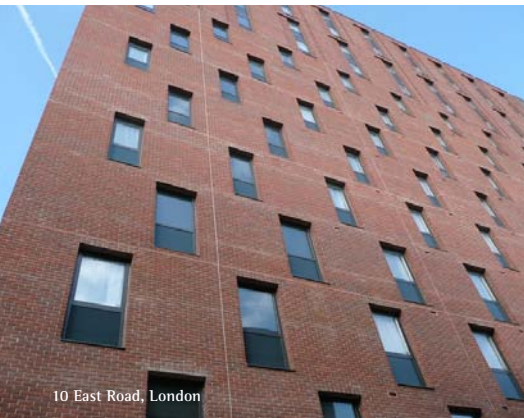


# The LEIAB composite window system

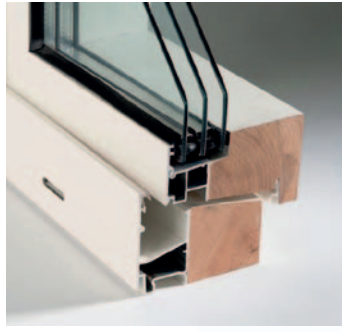
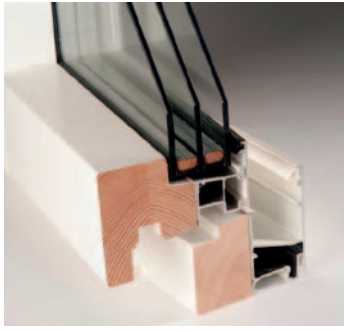
Swedish manufactured wood/aluminium composite windows



- ✓ High Quality
- ✓ High Performance
- ✓ High Delivery Precision

- ✓ Repeat Business
- ✓ Excellent Support and After Sales Service
- ✓ All at Competitive Prices





# LEIAB windows

Swedish manufactured  
wood/aluminium composite windows

## ■ Did you know that Leiab:

- ▶ Started in 1982.
- ▶ Produce 60,000 bespoke windows annually.
- ▶ Produce high performance windows and balcony doors.
- ▶ Have third party performance and quality auditing.
- ▶ Have many reference projects in the UK.
- ▶ Are tested to BS7950 and soon PAS24.
- ▶ Their windows require low maintenance.
- ▶ Listen and ensure that your requirements are fulfilled.
- ▶ Market themselves entirely using the word of mouth method.

To learn more about us please browse at:  
[www.leiab.co.uk](http://www.leiab.co.uk)

**LEIAB**  
WINDOW

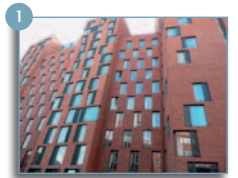
[WWW.LEIAB.CO.UK](http://WWW.LEIAB.CO.UK)





# Greater London Area References

1	10 East Road	Ardmore Construction Ltd	2011-2012	1200 units
2	Haggerston	OCL Facades Ltd	2012	670 units
3	Hornsey Road London	Elfield Construction	2012	100 units
4	Colne and Mersea Houses	United House Ltd	2011	1950 units
5	Raynham	Scandinavian Timber Ltd	2010-2012	110 units
6	Balmoral Gardens	Rydon Construction Ltd	2010	240 units
7	Nash Harris	Scandinavian Timber Ltd	2010	80 units
8	Barking Building	Ardmore Construction Ltd	2006-2009	2100 units
9	Stonebridge Hillside hub	Rydon Construction Ltd	2008	440 units
10	Chatham	Ardmore Construction Ltd	2008	630 units
11	Hornsey Road Baths	Ardmore Construction Ltd	2007-2008	1920 units
12	Block K1	Fairview Estates Housing Ltd	2007-2008	1500 units
13	Evelyn Street	Allenbuild Ltd	2006	190 units
14	Avenue Road	Evergreen Establishment	2005	160 units
15	Imperial Wharf	Scandinavian Timber Ltd	2003	1300 units
16	Century House	AT-Vinduer	2001-2002	1100 units



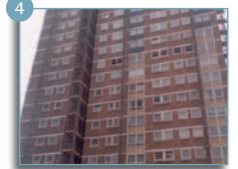
10 East Road  
2011-2012



Haggerston  
2012



Hornsey Road London  
2012



Colne and Mersea Houses  
2011



Raynham  
2010-2012



Balmoral Gardens  
2010



Nash Harris  
2010



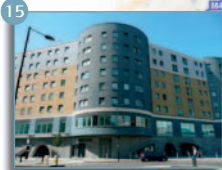
Barking Building  
2006-2009



Stonebridge Hillside hub  
2008



Century House  
2001-2002



Imperial Wharf  
2003



Avenue Road  
2005



Evelyn Street  
2006



Block K1  
2007-2008



Hornsey Road Baths  
2007-2008



Chatham  
2008

13 Evelyn Street  
2006

12 Block K1  
2007-2008

11 Hornsey Road Baths  
2007-2008

10 Chatham  
2008

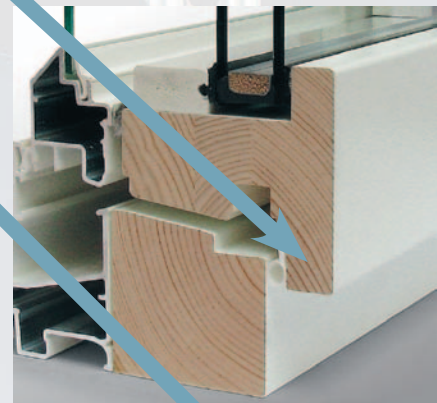
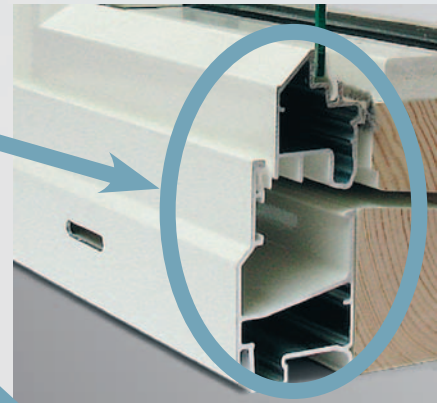
9 Stonebridge Hillside hub  
2008



# Swedish manufactured wood/aluminium composite windows

## ■ The hard advantages:

- ▶ Leiab's construction is unique. The bonded aluminium/wood ensures that moisture is not in contact with the woods and rain water is led out through the weep holes.
- ▶ The interior faces have a desirable wooden finish with a choice of close-grained Scandinavian pines or woods of your choice decorated to suit your tastes.
- ▶ A wide choice of aluminium profiles are available giving your project a distinctive touch.
- ▶ Every millimetre is standard.
- ▶ Glazing to your requirements.
- ▶ High performance – energy savings and sound reductions.
- ▶ A wide range of options – handles, trickle vents, integrated blinds etc.
- ▶ Robust ironmongery from Winkhaus who are well represented in the UK.
- ▶ SBD – tried and tested. BS 7950, PAS24 (in progress).
- ▶ The manufacturing materials are sourced from suppliers who have sustainable environmental policies.



## ■ The soft advantages:

- ▶ Low maintenance requirements without resorting to harmful impregnating methods.
- ▶ Long life and generous guarantees.
- ▶ High delivery precision.
- ▶ Ingenious design engineering unique for every project resulting in cost reductions.

Try us – we say what we mean and we mean what we say.